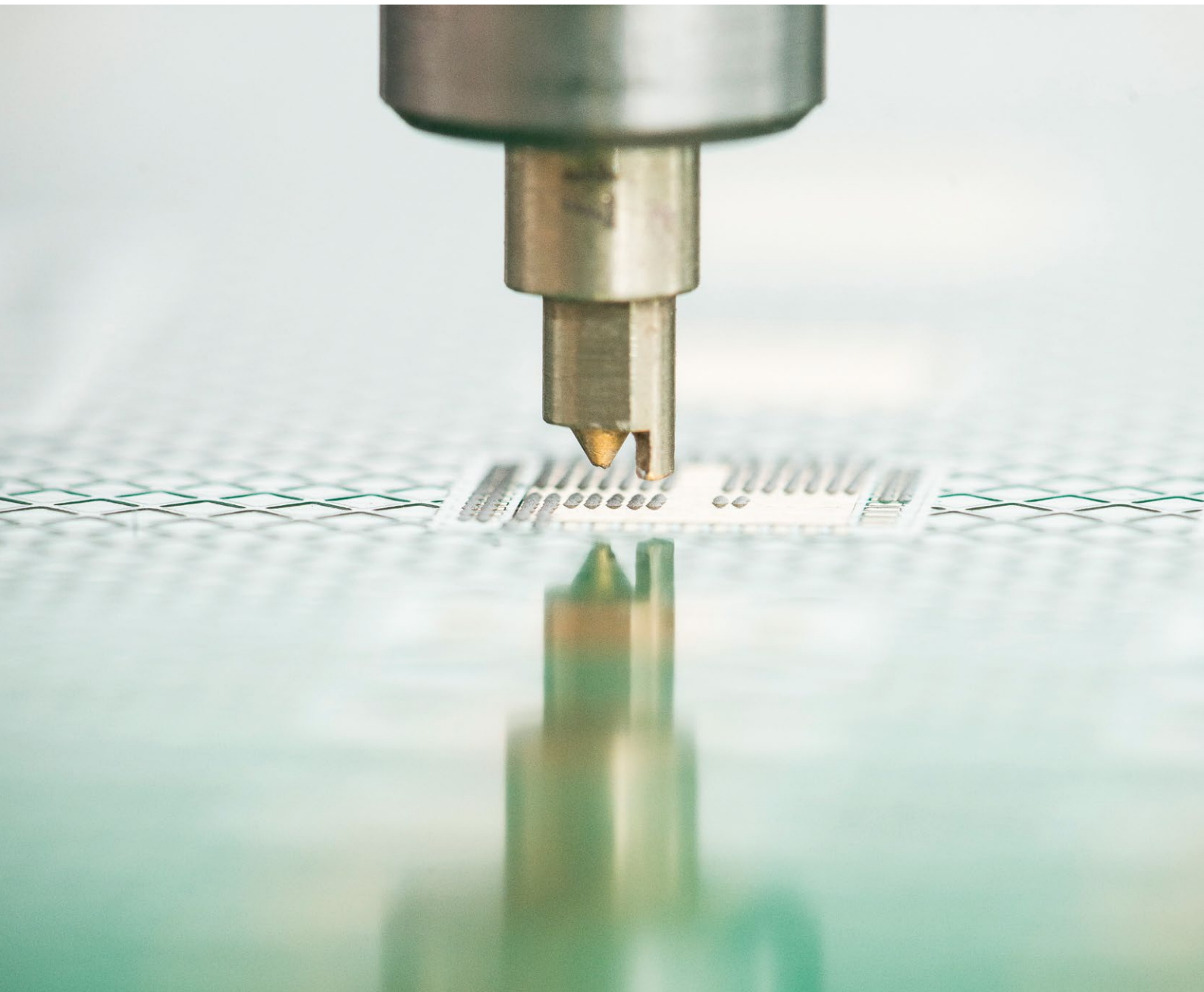


Dispense Technology

Straight to the point

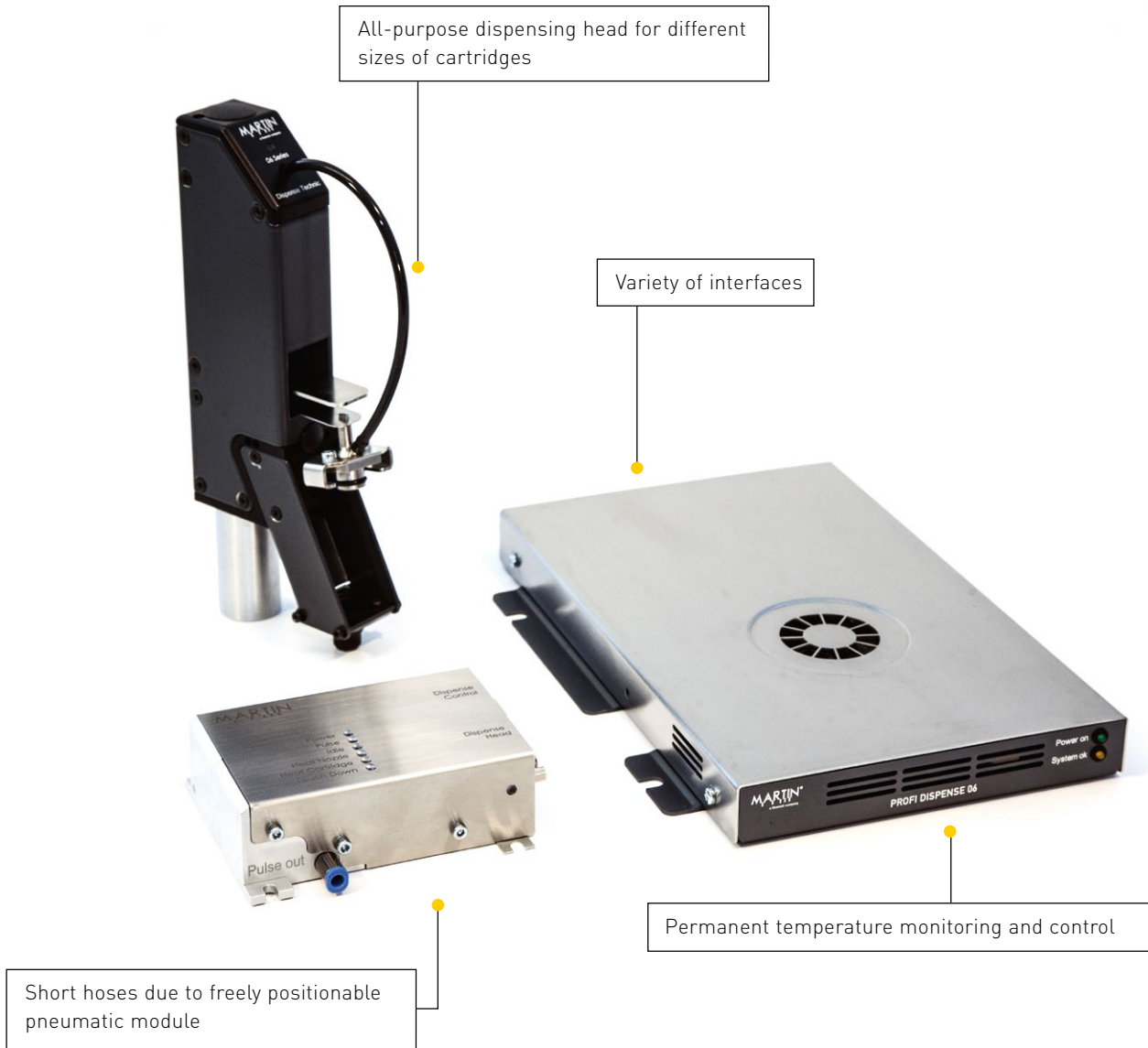


MARTIN[®]
a finetech company

Flexible integration: **PROFI DISPENSE 06**

PROFI DISPENSE 06 is our solution for professional dispensing. With their extremely flat housing format

and the remote dispensing head these devices are professional solutions to be integrated in automation technology.



CLEVER DISPENSE PRO software

All application parameters are stored in the **CLEVER DISPENSE PRO** software and allow a complete control of the dispensing process. The volumetric **MARTIN Dispense Technology** enables users to achieve a rapid parametrization and high reproducibility due to the material library. In this material library, all material characteristics relevant to the process can be stored and are immediately available for any application change.



Automated dispensing

Controlled by a PC or a system control all parameters such as dispensing pressure, retain vacuum or nozzle and cartridge temperature can be parameterized. All features ensure the

complete control of the complete dispensing process. The latest interface technologies enable a connection to the state of the art system controls.

Cartridge temperature control

Temperature range $-15K < \text{Ambient} < \text{max. } 50^{\circ}\text{C}$.
Extending the pot life for fast hardening materials and for optimizing the dispensing process through material-specific ambient temperature.

Nozzle temperature control

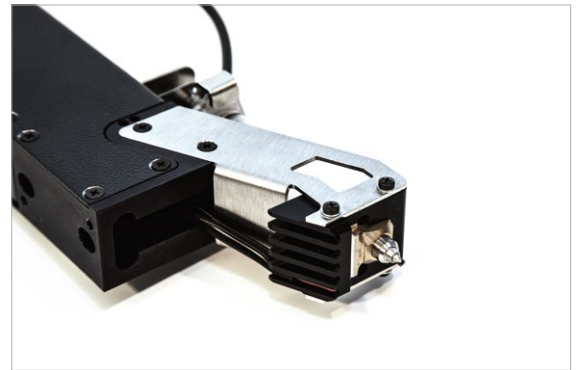
Temperature range $-15K < \text{Ambient} < \text{max. } 50^{\circ}\text{C}$.
Thereby application and moistening of the material is optimized and reproducible during the entire production process.

Height sensor

For precise contact to the substrate's surface. Increases the producibility of the dispensing result on uneven surfaces.

Interfaces

A network interface for integration is standard, as well as a USB and I/O interface for controlling the dispensing pulse via TTL or 24V-signals.



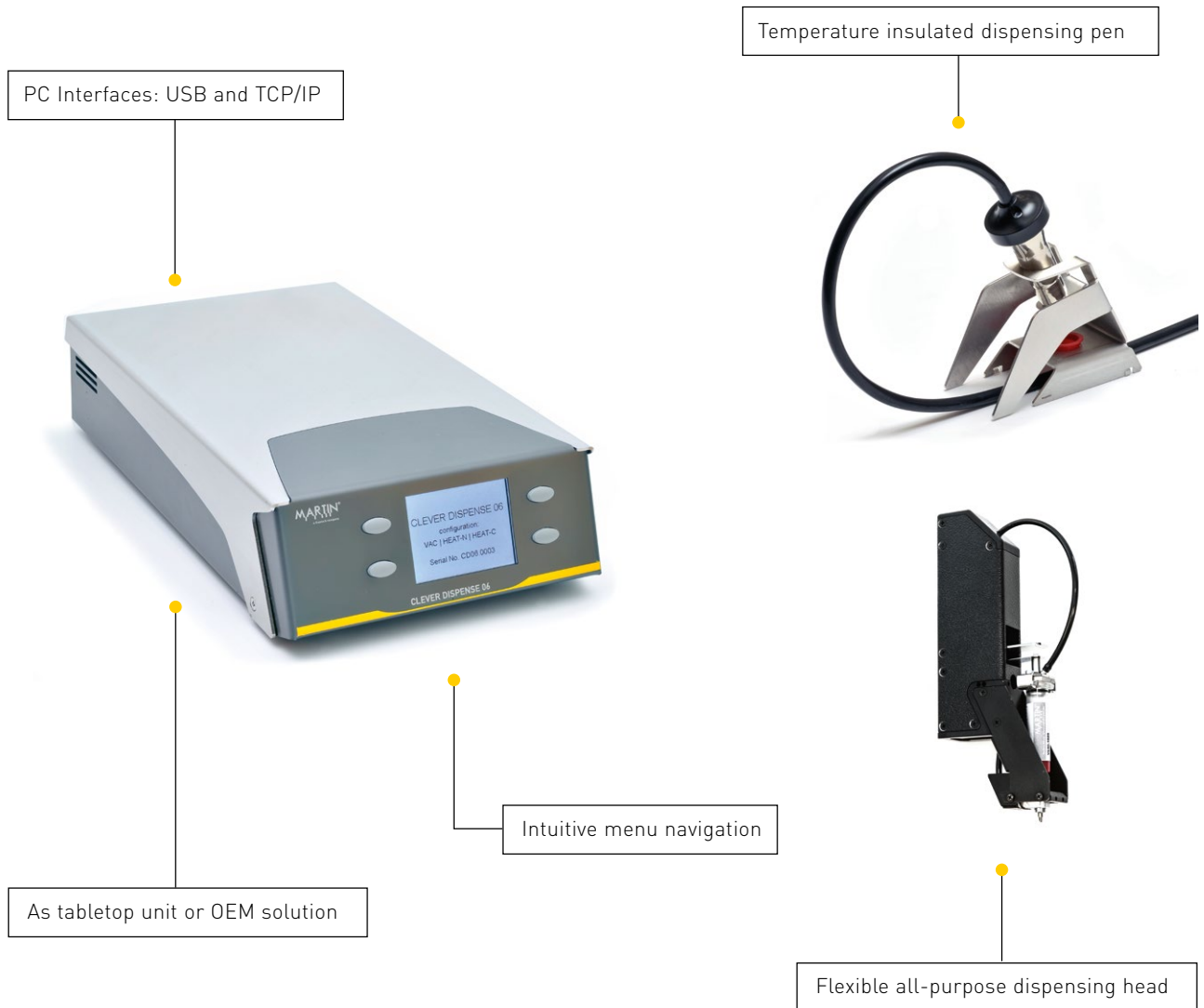
OEM integration

Being a company with development and production in Germany we would like to support you with your individual automation solutions.

Manually or automated: **CLEVER DISPENSE 06**

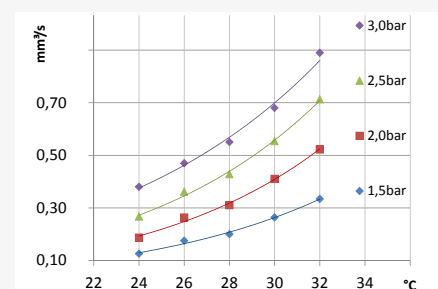
CLEVER DISPENSE 06 are professional dispensers for applications that require a maximum precision. Whether manually or automated – the volumetric operating dispensers convince due to their process stability. Dispensing pressure,

temperature and retain vacuum are set program-controlled. Communication via digital interfaces supports the control of all dispensing parameters.



Volumetric dispensing

Precise measurement of the dispensing pulse energy is the basis for high-precision dispensing. Also, to compensate viscosity variations, the current material temperature is included in the calculation. The dispensing parameters are determined through volumetric input of the dispensing quantity based on stored material characteristics. Those parameters are permanently monitored and automatically adjusted to environmental influences (temperature, pot life, filling level).



Flow Rate Solder Paste

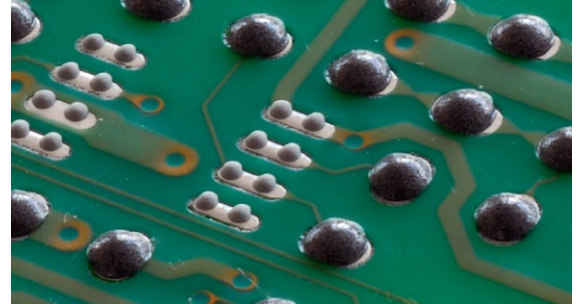
Dispensing in no time

The perfect balance of electronic, pneumatic and sensor technology ensures a very high accuracy and reproducibility in dispensing lines and dots. Ideal dispensing tasks can be

performed due to enormous configuration depth. All parameters can be stored in dispensing recipes and called up later in an instant.

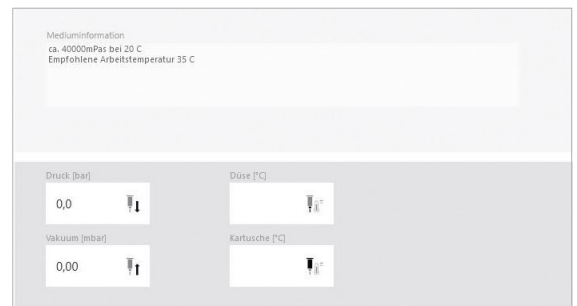
A real all-rounder

No retrofitting – simple dispense of materials with viscosity from 1 mPa to 100,000 mPa. Without any manual assistance the dispensing energy, retain vacuum as well as the required dispensing pressure are fully electronically controlled.



Dispensing according to recipe

The well-arranged PC software **CLEVER DISPENSE PRO** allows comfortable operation according to recipes. All application parameters are stored in the material library and allow complete control of the dispensing process from liquid to pasty material. All recipes can be executed using the graphic display.



Easy integration

The highly integrated and very compact design of the **CLEVER DISPENSE 06** is perfectly suitable to application in automation. Most modern interfaces are available for connection to the system control.



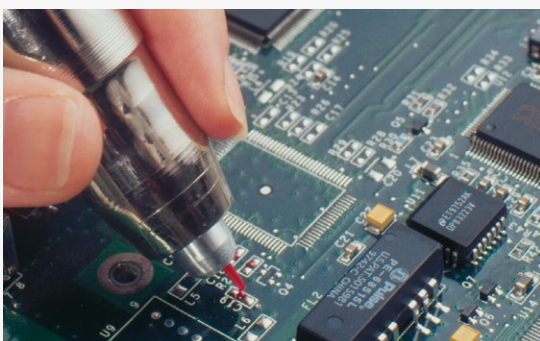
Constant viscosity

Materials' dispensing capability can be improved or even enabled by precise temperature adjustments. These experiences were included in the development of the MARTIN dispensing systems. Different models are available to control the heating and cooling of the nozzle and the cartridge.

Manually and precise: **SMART DISPENSE 06**

SMART DISPENSE 06 is a high-quality device for manual dispensing tasks that require high-precision. The volumetrically operating dispensers in which the dispensing

pressure and the temperature are adjusted program-controlled on the dispensing nozzle, convince due to their process stability in application of liquid to pasty media.



Reliable manual dispensing

MARTIN dispensing pens not only fit ergonomically perfect into the palm but also protect the medium from uncontrolled heating – for a consistently clean dispensing result.

On application of high-viscous material the viscosity can be adjusted through an optional integrated nozzle heating inside the dispensing pen. For low-viscous media a vacuum control is available as an option.

Accessories and consumables

Find the right solution for any application in the wide selection of dispensing nozzles and adapters. MARTIN dispensing nozzles are designed to expel material with a minimum primary pressure. They are ideal for dispensing minimal amounts.

All nozzles are equipped with a standard Luer-Lock connecting thread and compatible with MARTIN heating modules.

Solder pastes lead-free or leaded

Solder pastes capable of dispensing – lead-free or leaded – are available in stock, with grain sizes from class III to class VI.

Solder pastes are delivered in thermal packaging from a minimum quantity of one with specifications on optimum dispensing parameters for temperature and pressure included.



Dispensing nozzles with spacer

Mechanical spacers ensure constant distance between dispensing nozzle and substrate and thus reproducible results.



Cleaning dispensing nozzles and substrates

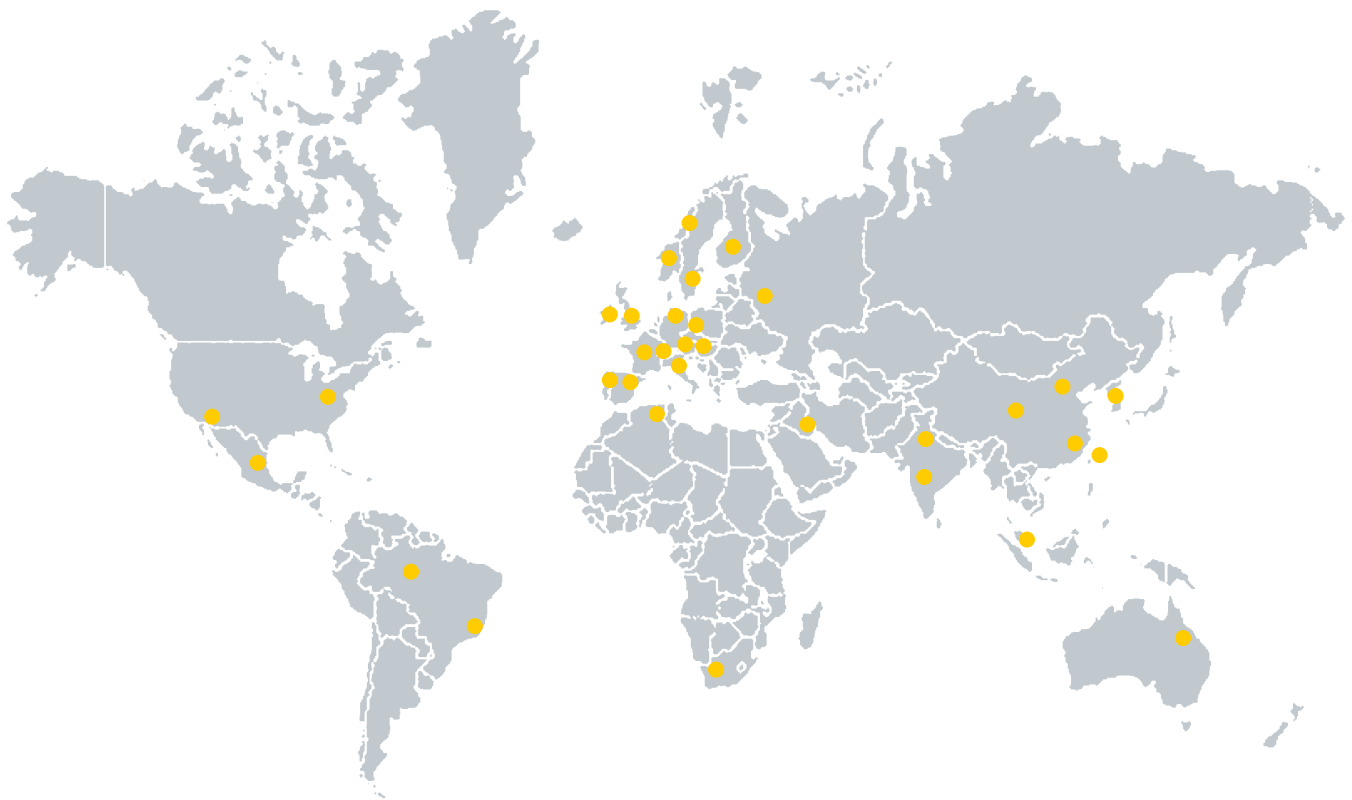
Cleaning liquids and tools protect your dispensing nozzles from early wear. Solder paste and other materials can be removed without leaving any residues.



Service and support around the globe

Wherever you are, MARTIN is right around the corner. What distinguishes our technologies you are also entitled to expect from our service and support: expertise, reliability and fast reaction.

In addition, we support you with our practice-based seminars held at our training centers. They provide you with sound knowledge and make the most modern MARTIN device technology available to you.



MARTIN[®]
a finetech company